

# B

## ENTERGY MIDTOWN 230KV SUBSTATION DEMOLITION & REBUILD

Barriere demolished and reconstructed a defunct electrical substation in New Orleans. The substation sat on a compact 350'x350' footprint and was sandwiched by Interstate 10, an active railroad, and a city neighborhood. Crews demolished the "Steel Spider Web" piece by piece and broke up the pavement.

The team drove (520) 60' timber and (21) 70' precast concrete piles to support the foundation for a prefabricated control house and constructed 170 concrete foundations for the new electrical structures. Barriere also installed a 1000' duct bank 9' deep as part of the power distribution infrastructure and a 708' concrete retaining wall on 3 sides of the property to contain the fill required to achieve the required finished grade.

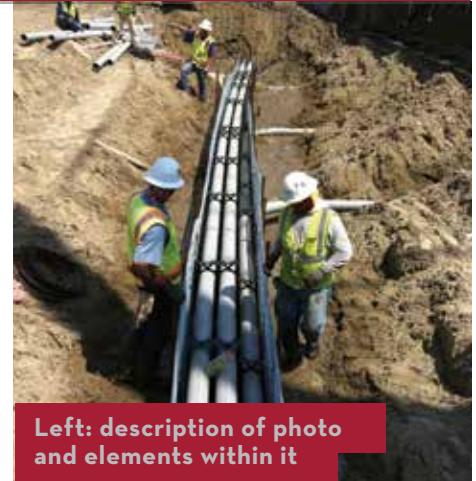
**LOCATION** New Orleans, LA

**VALUE** \$3.7 million

**MAN HOURS** 15,200

**MATERIALS USED** 1,300 cy of concrete  
150,000 lbs of rebar  
1,100 linear ft of drainage pipe  
530 timber piles  
21 concrete piles

**AWARDS** ABC Bayou  
GNOBR  
ENR



Left: description of photo and elements within it

